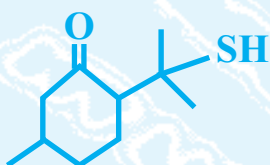


Flavorfile



The active component in this FlavorActiV™ Beer Flavour Standard is *p*-menthane-8-thiol-3-one

CATTY

Associated terms

- Blackcurrant leaves
- Ribes
- Tom-cat urine

Importance

A catty flavour can often be found in the early stages of oxidation. It is generally considered to be an **off-flavour**. However, it is part of the normal flavour profile of some ales.

Origins

Contamination of **raw materials** with a precursor of catty aroma.

Analysis

- Gas chromatography
- Very difficult to measure in beer, except by sensory analysis

Typical concentration in beer

—

Approximate flavour threshold

15 ng/l

Beer Flavour Wheel number

0810

Remarks

The material used in this flavour standard imparts a catty aroma to beer. However, other compounds may be responsible for this note in commercial beers.

©1997 - 2005 FlavorActiV Limited



FFEN38462-22-5
Issue number 004
8th July 2005

FlavorActiV Limited • Sanderum House
Oakley Road • Chinnor • Oxon OX39 4TW • UK
☎ +44 (0)1844 354154 • FAX +44 (0)1844 354508
www.flavoractiv.com

FlavorActiV™
Beer Flavour
Standards Kit